



Push-To-Connect Fittings



- Thermoplastic body components
- Nickel-plated brass body components
- Stainless steel gripping claw
- Designed for nylon and polyurethane tubing
- Pneumatic applications
- Pre-applied thread sealant
- 200psi working pressure

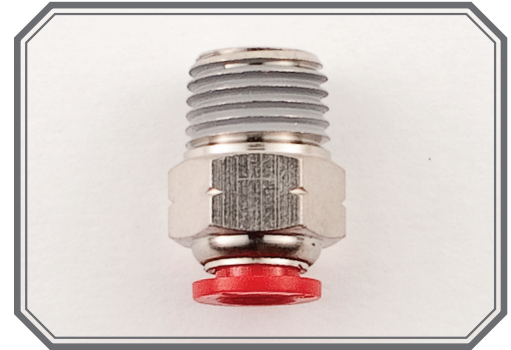


Table of Contents

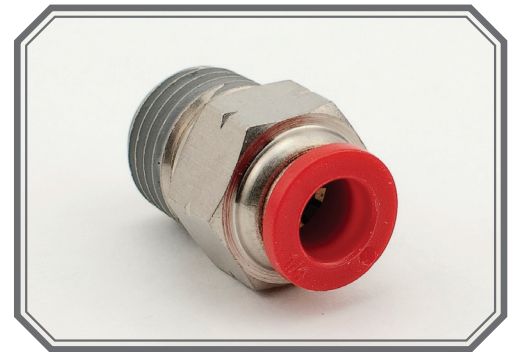
Male Straight	3
Male Elbow	4
Male Branch Tee.....	5
Male Run Tee.....	6
Male Y	7
Female Elbow	8
Union Straight	8
Union Elbow	9
Union Tee.....	9
Union Y.....	9
Reducer	10
Reducer Y.....	10
Reducer Tee	10
Union Cross.....	11
Cap.....	11
Plug	11
Female Straight	12
Female Bulkhead.....	13
Bulkhead Union	13
Bulkhead Union Elbow	14
Plug In Elbow	14
Plug In Reducer.....	14
Plug In Y	15

Male Straight

Name	Description (<i>Fractional Inch</i>)
JMI-532-1032	MALE STRAIGHT 5/32" TUBE X 10-32 THREAD
JMI-532-2T	MALE STRAIGHT 5/32" TUBE X 1/8NPT
JMI-532-4T	MALE STRAIGHT 5/32" TUBE X 1/4NPT
JMI-14-2T	MALE STRAIGHT 1/4" TUBE X 1/8NPT
JMI-14-4T	MALE STRAIGHT 1/4" TUBE X 1/4NPT
JMI-14-6T	MALE STRAIGHT 1/4" TUBE X 3/8NPT
JMI-38-4T	MALE STRAIGHT 3/8" TUBE X 1/4NPT
JMI-38-6T	MALE STRAIGHT 3/8" TUBE X 3/8NPT
JMI-38-8T	MALE STRAIGHT 3/8" TUBE X 1/2NPT
JMI-12-6T	MALE STRAIGHT 1/2" TUBE X 3/8NPT
JMI-12-8T	MALE STRAIGHT 1/2" TUBE X 1/2NPT



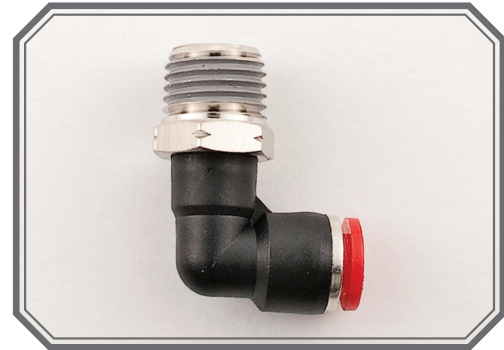
Name	Description (<i>Metric</i>)
KMI-4-1032	MALE STRAIGHT 4MM TUBE X 10-32 THREAD
KMI-4-2T	MALE STRAIGHT 4MM TUBE X 1/8NPT
KMI-4-4T	MALE STRAIGHT 4MM TUBE X 1/4NPT
KMI-6-2T	MALE STRAIGHT 6MM TUBE X 1/8NPT
KMI-6-4T	MALE STRAIGHT 6MM TUBE X 1/4NPT
KMI-6-6T	MALE STRAIGHT 6MM TUBE X 3/8NPT
KMI-8-4T	MALE STRAIGHT 8MM TUBE X 1/4NPT
KMI-8-6T	MALE STRAIGHT 8MM TUBE X 3/8NPT
KMI-8-8T	MALE STRAIGHT 8MM TUBE X 1/2NPT
KMI-10-4T	MALE STRAIGHT 10MM TUBE X 1/4NPT
KMI-10-6T	MALE STRAIGHT 10MM TUBE X 3/8NPT
KMI-10-8T	MALE STRAIGHT 10MM TUBE X 1/2NPT
KMI-12-6T	MALE STRAIGHT 12MM TUBE X 3/8NPT
KMI-12-8T	MALE STRAIGHT 12MM TUBE X 1/2NPT



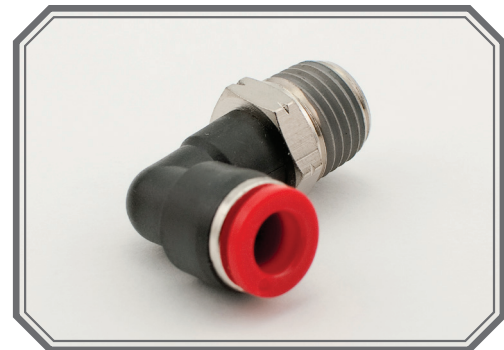


Male Elbow

Name	Description (<i>Fractional Inch</i>)
JML-532-1032	MALE ELBOW 5/32" TUBE X 10-32 THREAD
JML-532-2T	MALE ELBOW 5/32" TUBE X 1/8NPT
JML-532-4T	MALE ELBOW 5/32" TUBE X 1/4NPT
JML-14-2T	MALE ELBOW 1/4" TUBE X 1/8NPT
JML-14-4T	MALE ELBOW 1/4" TUBE X 1/4NPT
JML-14-6T	MALE ELBOW 1/4" TUBE X 3/8NPT
JML-38-4T	MALE ELBOW 3/8" TUBE X 1/4NPT
JML-38-6T	MALE ELBOW 3/8" TUBE X 3/8NPT
JML-38-8T	MALE ELBOW 3/8" TUBE X 1/2NPT
JML-12-6T	MALE ELBOW 1/2" TUBE X 3/8NPT
JML-12-8T	MALE ELBOW 1/2" TUBE X 1/2NPT

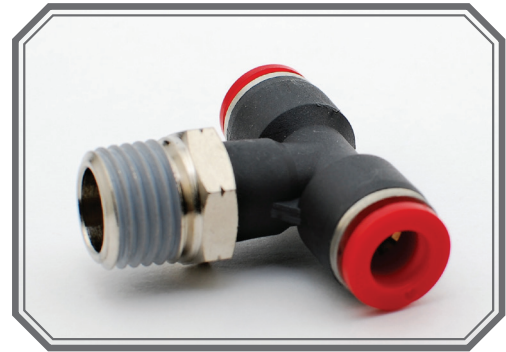


Name	Description (<i>Metric</i>)
KML-4-1032	MALE ELBOW 4MM TUBE X 10-32 THREAD
KML-4-2T	MALE ELBOW 4MM TUBE X 1/8NPT
KML-4-4T	MALE ELBOW 4MM TUBE X 1/4NPT
KML-6-2T	MALE ELBOW 6MM TUBE X 1/8NPT
KML-6-4T	MALE ELBOW 6MM TUBE X 1/4NPT
KML-6-6T	MALE ELBOW 6MM TUBE X 3/8NPT
KML-8-4T	MALE ELBOW 8MM TUBE X 1/4NPT
KML-8-6T	MALE ELBOW 8MM TUBE X 3/8NPT
KML-8-8T	MALE ELBOW 8MM TUBE X 1/2NPT
KML-10-4T	MALE ELBOW 10MM TUBE X 1/4NPT
KML-10-6T	MALE ELBOW 10MM TUBE X 3/8NPT
KML-10-8T	MALE ELBOW 10MM TUBE X 1/2NPT
KML-12-6T	MALE ELBOW 12MM TUBE X 3/8NPT
KML-12-8T	MALE ELBOW 12MM TUBE X 1/2NPT

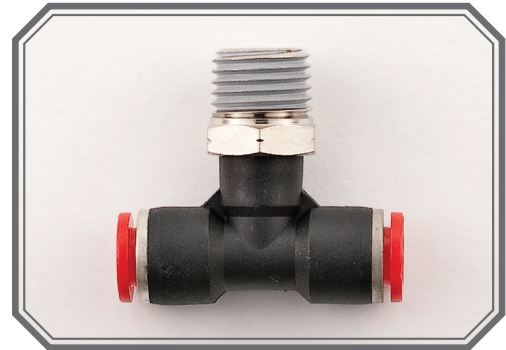


Male Branch Tee

Name	Description (<i>Fractional Inch</i>)
JBT-532-1032	MALE BRANCH TEE 5/32" TUBE X 10-32 THREAD
JBT-532-2T	MALE BRANCH TEE 5/32" TUBE X 1/8NPT
JBT-532-4T	MALE BRANCH TEE 5/32" TUBE X 1/4NPT
JBT-14-2T	MALE BRANCH TEE 1/4" TUBE X 1/8NPT
JBT-14-4T	MALE BRANCH TEE 1/4" TUBE X 1/4NPT
JBT-14-6T	MALE BRANCH TEE 1/4" TUBE X 3/8NPT
JBT-38-4T	MALE BRANCH TEE 3/8" TUBE X 1/4NPT
JBT-38-6T	MALE BRANCH TEE 3/8" TUBE X 3/8NPT
JBT-38-8T	MALE BRANCH TEE 3/8" TUBE X 1/2NPT
JBT-12-6T	MALE BRANCH TEE 1/2" TUBE X 3/8NPT
JBT-12-8T	MALE BRANCH TEE 1/2" TUBE X 1/2NPT

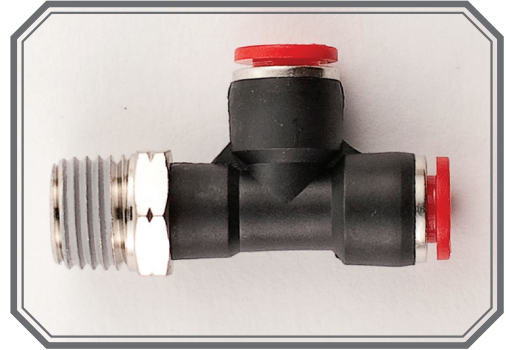


Name	Description (<i>Metric</i>)
KBT-4-1032	MALE BRANCH TEE 4MM TUBE X 10-32 THREAD
KBT-4-2T	MALE BRANCH TEE 4MM TUBE X 1/8NPT
KBT-4-4T	MALE BRANCH TEE 4MM TUBE X 1/4NPT
KBT-6-2T	MALE BRANCH TEE 6MM TUBE X 1/8NPT
KBT-6-4T	MALE BRANCH TEE 6MM TUBE X 1/4NPT
KBT-6-6T	MALE BRANCH TEE 6MM TUBE X 3/8NPT
KBT-8-4T	MALE BRANCH TEE 8MM TUBE X 1/4NPT
KBT-8-6T	MALE BRANCH TEE 8MM TUBE X 3/8NPT
KBT-8-8T	MALE BRANCH TEE 8MM TUBE X 1/2NPT
KBT-10-4T	MALE BRANCH TEE 10MM TUBE X 1/4NPT
KBT-10-6T	MALE BRANCH TEE 10MM TUBE X 3/8NPT
KBT-10-8T	MALE BRANCH TEE 10MM TUBE X 1/2NPT
KBT-12-6T	MALE BRANCH TEE 12MM TUBE X 3/8NPT
KBT-12-8T	MALE BRANCH TEE 12MM TUBE X 1/2NPT

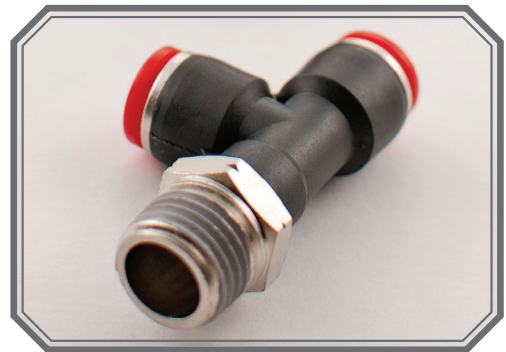


Male Run Tee

Name	Description (<i>Fractional Inch</i>)
JRT-532-1032	MALE RUN TEE 5/32" TUBE X 10-32 THREAD
JRT-532-2T	MALE RUN TEE 5/32" TUBE X 1/8NPT
JRT-532-4T	MALE RUN TEE 5/32" TUBE X 1/4NPT
JRT-14-2T	MALE RUN TEE 1/4" TUBE X 1/8NPT
JRT-14-4T	MALE RUN TEE 1/4" TUBE X 1/4NPT
JRT-14-6T	MALE RUN TEE 1/4" TUBE X 3/8NPT
JRT-38-4T	MALE RUN TEE 3/8" TUBE X 1/4NPT
JRT-38-6T	MALE RUN TEE 3/8" TUBE X 3/8NPT
JRT-38-8T	MALE RUN TEE 3/8" TUBE X 1/2NPT
JRT-12-6T	MALE RUN TEE 1/2" TUBE X 3/8NPT
JRT-12-8T	MALE RUN TEE 1/2" TUBE X 1/2NPT



Name	Description (<i>Metric</i>)
KRT-4-1032	MALE RUN TEE 4MM TUBE X 10-32 THREAD
KRT-4-2T	MALE RUN TEE 4MM TUBE X 1/8NPT
KRT-4-4T	MALE RUN TEE 4MM TUBE X 1/4NPT
KRT-6-2T	MALE RUN TEE 6MM TUBE X 1/8NPT
KRT-6-4T	MALE RUN TEE 6MM TUBE X 1/4NPT
KRT-6-6T	MALE RUN TEE 6MM TUBE X 3/8NPT
KRT-8-4T	MALE RUN TEE 8MM TUBE X 1/4NPT
KRT-8-6T	MALE RUN TEE 8MM TUBE X 3/8NPT
KRT-8-8T	MALE RUN TEE 8MM TUBE X 1/2NPT
KRT-10-4T	MALE RUN TEE 10MM TUBE X 1/4NPT
KRT-10-6T	MALE RUN TEE 10MM TUBE X 3/8NPT
KRT-10-8T	MALE RUN TEE 10MM TUBE X 1/2NPT
KRT-12-6T	MALE RUN TEE 12MM TUBE X 3/8NPT
KRT-12-8T	MALE RUN TEE 12MM TUBE X 1/2NPT

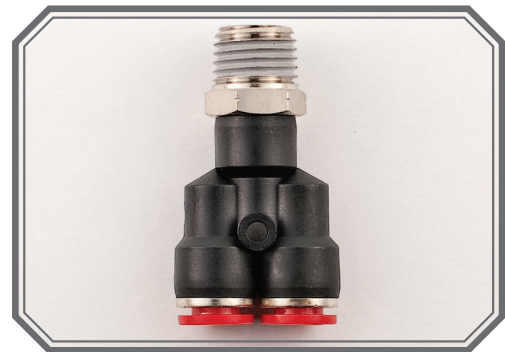


Male Y

Name	Description (<i>Fractional Inch</i>)
JMY-532-1032	MALE Y 5/32" TUBE X 10-32 THREAD
JMY-532-2T	MALE Y 5/32" TUBE X 1/8NPT
JMY-532-4T	MALE Y 5/32" TUBE X 1/4NPT
JMY-14-2T	MALE Y 1/4" TUBE X 1/8NPT
JMY-14-4T	MALE Y 1/4" TUBE X 1/4NPT
JMY-14-6T	MALE Y 1/4" TUBE X 3/8NPT
JMY-38-4T	MALE Y 3/8" TUBE X 1/4NPT
JMY-38-6T	MALE Y 3/8" TUBE X 3/8NPT
JMY-38-8T	MALE Y 3/8" TUBE X 1/2NPT
JMY-12-6T	MALE Y 1/2" TUBE X 3/8NPT
JMY-12-8T	MALE Y 1/2" TUBE X 1/2NPT



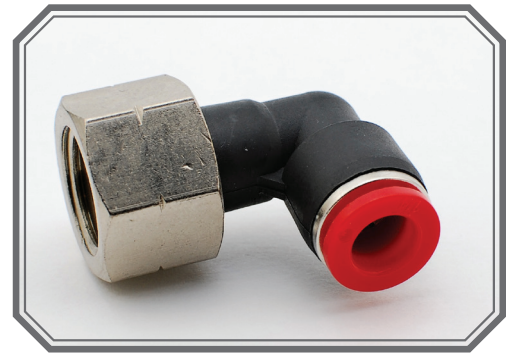
Name	Description (<i>Metric</i>)
KMY-4-1032	MALE Y 4MM TUBE X 10-32 THREAD
KMY-4-2T	MALE Y 4MM TUBE X 1/8NPT
KMY-4-4T	MALE Y 4MM TUBE X 1/4NPT
KMY-6-2T	MALE Y 6MM TUBE X 1/8NPT
KMY-6-4T	MALE Y 6MM TUBE X 1/4NPT
KMY-6-6T	MALE Y 6MM TUBE X 3/8NPT
KMY-8-4T	MALE Y 8MM TUBE X 1/4NPT
KMY-8-6T	MALE Y 8MM TUBE X 3/8NPT
KMY-8-8T	MALE Y 8MM TUBE X 1/2NPT
KMY-10-4T	MALE Y 10MM TUBE X 1/4NPT
KMY-10-6T	MALE Y 10MM TUBE X 3/8NPT
KMY-10-8T	MALE Y 10MM TUBE X 1/2NPT
KMY-12-6T	MALE Y 12MM TUBE X 3/8NPT
KMY-12-8T	MALE Y 12MM TUBE X 1/2NPT





Female Elbow

Name	Description (Fractional Inch)
JFL-532-1032	FEMALE ELBOW 5/32" TUBE X 10-32 THREAD
JFL-532-2T	FEMALE ELBOW 5/32" TUBE X 1/8NPT
JFL-532-4T	FEMALE ELBOW 5/32" TUBE X 1/4NPT
JFL-14-2T	FEMALE ELBOW 1/4" TUBE X 1/8NPT
JFL-14-4T	FEMALE ELBOW 1/4" TUBE X 1/4NPT
JFL-14-6T	FEMALE ELBOW 1/4" TUBE X 3/8NPT
JFL-38-4T	FEMALE ELBOW 3/8" TUBE X 1/4NPT
JFL-38-6T	FEMALE ELBOW 3/8" TUBE X 3/8NPT
JFL-38-8T	FEMALE ELBOW 3/8" TUBE X 1/2NPT
JFL-12-6T	FEMALE ELBOW 1/2" TUBE X 3/8NPT
JFL-12-8T	FEMALE ELBOW 1/2" TUBE X 1/2NPT

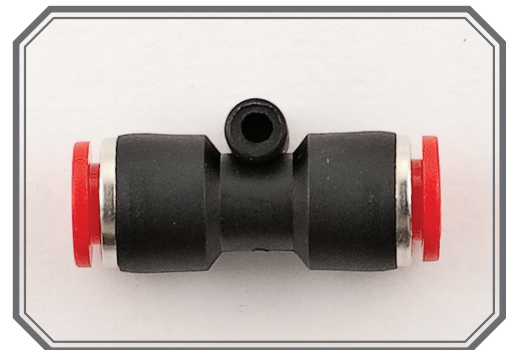


Name	Description (Metric)
KFL-4-1032	FEMALE ELBOW 4MM TUBE X 10-32 THREAD
KFL-4-2T	FEMALE ELBOW 4MM TUBE X 1/8NPT
KFL-4-4T	FEMALE ELBOW 4MM TUBE X 1/4NPT
KFL-6-2T	FEMALE ELBOW 6MM TUBE X 1/8NPT
KFL-6-4T	FEMALE ELBOW 6MM TUBE X 1/4NPT
KFL-6-6T	FEMALE ELBOW 6MM TUBE X 3/8NPT
KFL-8-2T	FEMALE ELBOW 8MM TUBE X 1/8NPT
KFL-8-4T	FEMALE ELBOW 8MM TUBE X 1/4NPT
KFL-8-6T	FEMALE ELBOW 8MM TUBE X 3/8NPT
KFL-10-4T	FEMALE ELBOW 10MM TUBE X 1/4NPT
KFL-10-6T	FEMALE ELBOW 10MM TUBE X 3/8NPT
KFL-10-8T	FEMALE ELBOW 10MM TUBE X 1/2NPT
KFL-12-6T	FEMALE ELBOW 12MM TUBE X 3/8NPT
KFL-12-8T	FEMALE ELBOW 12MM TUBE X 1/2NPT

Union Straight

Name	Description (Fractional Inch)
JUI-532	UNION STRAIGHT 5/32" TUBE X 5/32 TUBE
JUI-14	UNION STRAIGHT 1/4" TUBE X 1/4 TUBE
JUI-38	UNION STRAIGHT 3/8" TUBE X 3/8 TUBE
JUI-12	UNION STRAIGHT 1/2" TUBE X 1/2 TUBE

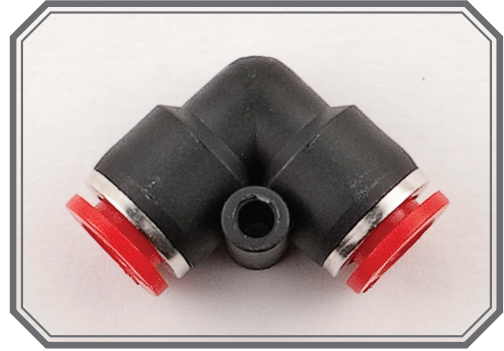
Name	Description (Metric)
KUI-4	UNION STRAIGHT 4MM TUBE X 4MM TUBE
KUI-6	UNION STRAIGHT 6MM TUBE X 6MM TUBE
KUI-8	UNION STRAIGHT 8MM TUBE X 8MM TUBE
KUI-10	UNION STRAIGHT 10MM TUBE X 10MM TUBE
KUI-12	UNION STRAIGHT 12MM TUBE X 12MM TUBE



Union Elbow

Name	Description (<i>Fractional Inch</i>)
JUL-532	UNION ELBOW 5/32" TUBE X 5/32 TUBE
JUL-14	UNION ELBOW 1/4" TUBE X 1/4 TUBE
JUL-38	UNION ELBOW 3/8" TUBE X 3/8 TUBE
JUL-12	UNION ELBOW 1/2" TUBE X 1/2 TUBE

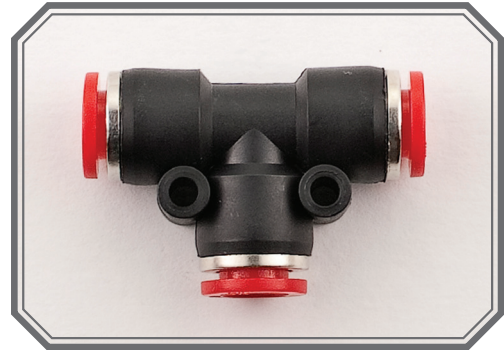
Name	Description (<i>Metric</i>)
KUL-4	UNION ELBOW 4MM TUBE X 4MM TUBE
KUL-6	UNION ELBOW 6MM TUBE X 6MM TUBE
KUL-8	UNION ELBOW 8MM TUBE X 8MM TUBE
KUL-10	UNION ELBOW 10MM TUBE X 10MM TUBE
KUL-12	UNION ELBOW 12MM TUBE X 12MM TUBE



Union Tee

Name	Description (<i>Fractional Inch</i>)
JUT-532	UNION TEE 5/32" TUBE X 5/32 TUBE
JUT-14	UNION TEE 1/4" TUBE X 1/4 TUBE
JUT-38	UNION TEE 3/8" TUBE X 3/8 TUBE
JUT-12	UNION TEE 1/2" TUBE X 1/2 TUBE

Name	Description (<i>Metric</i>)
KUT-4	UNION TEE 4MM TUBE X 4MM TUBE
KUT-6	UNION TEE 6MM TUBE X 6MM TUBE
KUT-8	UNION TEE 8MM TUBE X 8MM TUBE
KUT-10	UNION TEE 10MM TUBE X 10MM TUBE
KUT-12	UNION TEE 12MM TUBE X 12MM TUBE



Union Y

Name	Description (<i>Fractional Inch</i>)
JUY-532	UNION Y 5/32" TUBE X 5/32 TUBE
JUY-14	UNION Y 1/4" TUBE X 1/4 TUBE
JUY-38	UNION Y 3/8" TUBE X 3/8 TUBE
JUY-12	UNION Y 1/2" TUBE X 1/2 TUBE

Name	Description (<i>Metric</i>)
KUY-4	UNION Y 4MM TUBE X 4MM TUBE
KUY-6	UNION Y 6MM TUBE X 6MM TUBE
KUY-8	UNION Y 8MM TUBE X 8MM TUBE
KUY-10	UNION Y 10MM TUBE X 10MM TUBE
KUY-12	UNION Y 12MM TUBE X 12MM TUBE





Reducer

Name	Description (Fractional Inch)
JVI-14-532	REDUCER 1/4" TUBE X 5/32 TUBE
JVI-38-14	REDUCER 3/8" TUBE X 1/4 TUBE
JVI-12-38	REDUCER 1/2" TUBE X 3/8 TUBE

Name	Description (Metric)
KVI-6-4	REDUCER 6MM TUBE X 4MM TUBE
KVI-8-6	REDUCER 8MM TUBE X 6MM TUBE
KVI-10-8	REDUCER 10MM TUBE X 8MM TUBE
KVI-12-10	REDUCER 12MM TUBE X 10MM TUBE



Reducer Y

Name	Description (Fractional Inch)
JVY-14-532	REDUCER Y 1/4" TUBE X 5/32 TUBE
JVY-38-14	REDUCER Y 3/8" TUBE X 1/4 TUBE
JVY-12-38	REDUCER Y 1/2" TUBE X 3/8 TUBE

Name	Description (Metric)
KVY-6-4	REDUCER Y 6MM TUBE X 4MM TUBE
KVY-8-6	REDUCER Y 8MM TUBE X 6MM TUBE
KVY-10-8	REDUCER Y 10MM TUBE X 8MM TUBE
KVY-12-10	REDUCER Y 12MM TUBE X 10MM TUBE



Reducer Tee

Name	Description (Fractional Inch)
JVT-14-532	REDUCER TEE 1/4" TUBE X 5/32 TUBE
JVT-38-14	REDUCER TEE 3/8" TUBE X 1/4 TUBE
JVT-12-38	REDUCER TEE 1/2" TUBE X 3/8 TUBE

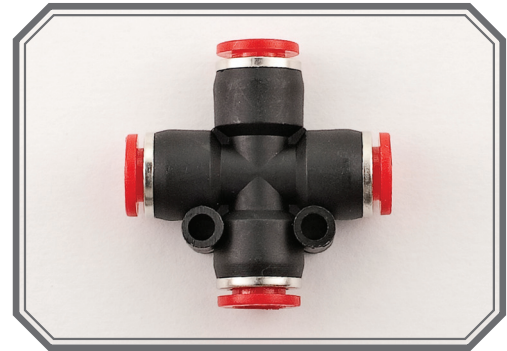
Name	Description (Metric)
KVT-6-4	REDUCER TEE 6MM TUBE X 4MM TUBE
KVT-8-6	REDUCER TEE 8MM TUBE X 6MM TUBE
KVT-10-8	REDUCER TEE 10MM TUBE X 8MM TUBE
KVT-12-10	REDUCER TEE 12MM TUBE X 10MM TUBE



Union Cross

Name	Description (Fractional Inch)
JUX-532	UNION CROSS 5/32" TUBE
JUX-14	UNION CROSS 1/4" TUBE
JUX-38	UNION CROSS 3/8" TUBE
JUX-12	UNION CROSS 1/2" TUBE

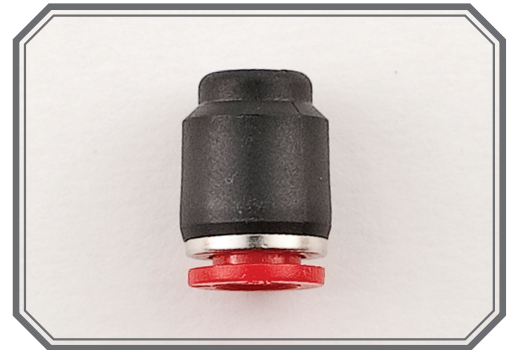
Name	Description (Metric)
KUX-4	UNION CROSS 4MM TUBE
KUX-6	UNION CROSS 6MM TUBE
KUX-8	UNION CROSS 8MM TUBE
KUX-10	UNION CROSS 10MM TUBE
KUX-12	UNION CROSS 12MM TUBE



Cap

Name	Description (Fractional Inch)
JCI-532	CAP 5/32" TUBE
JCI-14	CAP 1/4" TUBE
JCI-38	CAP 3/8" TUBE
JCI-12	CAP 1/2" TUBE

Name	Description (Metric)
KCI-4	CAP 4MM TUBE
KCI-6	CAP 6MM TUBE
KCI-8	CAP 8MM TUBE
KCI-10	CAP 10MM TUBE
KCI-12	CAP 12MM TUBE



Plug

Name	Description (Fractional Inch)
JPI-532	PLUG 5/32" TUBE
JPI-14	PLUG 1/4" TUBE
JPI-38	PLUG 3/8" TUBE
JPI-12	PLUG 1/2" TUBE

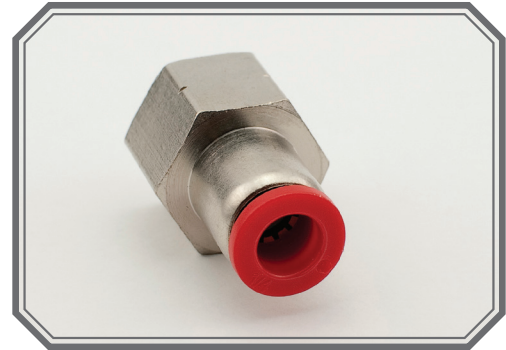
Name	Description (Metric)
KPI-4	PLUG 4MM TUBE
KPI-6	PLUG 6MM TUBE
KPI-8	PLUG 8MM TUBE
KPI-10	PLUG 10MM TUBE
KPI-12	PLUG 12MM TUBE



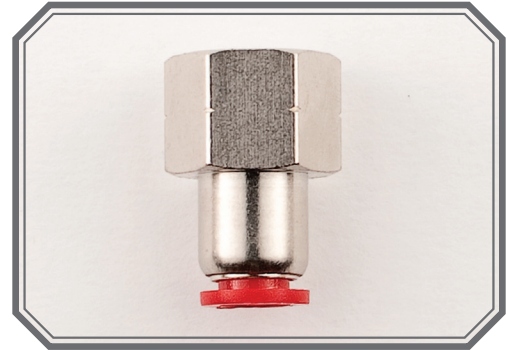


Female Straight

Name	Description (<i>Fractional Inch</i>)
JFI-532-2T	FEMALE STRAIGHT 5/32" TUBE X 1/8NPT
JFI-532-4T	FEMALE STRAIGHT 5/32" TUBE X 1/4NPT
JFI-14-2T	FEMALE STRAIGHT 1/4" TUBE X 1/8NPT
JFI-14-4T	FEMALE STRAIGHT 1/4" TUBE X 1/4NPT
JFI-14-6T	FEMALE STRAIGHT 1/4" TUBE X 3/8NPT
JFI-38-4T	FEMALE STRAIGHT 3/8" TUBE X 1/4NPT
JFI-38-6T	FEMALE STRAIGHT 3/8" TUBE X 3/8NPT
JFI-38-8T	FEMALE STRAIGHT 3/8" TUBE X 1/2NPT
JFI-12-6T	FEMALE STRAIGHT 1/2" TUBE X 3/8NPT

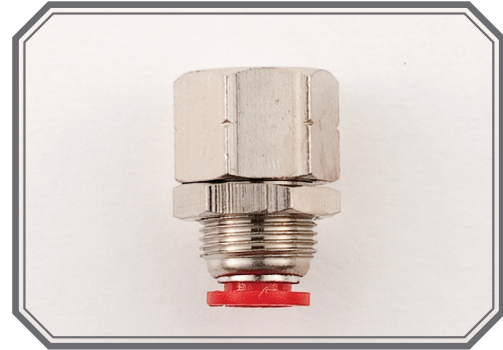


Name	Description (<i>Metric</i>)
KFI-4-2T	FEMALE STRAIGHT 4MM TUBE X 1/8NPT
KFI-4-4T	FEMALE STRAIGHT 4MM TUBE X 1/4NPT
KFI-6-2T	FEMALE STRAIGHT 6MM TUBE X 1/8NPT
KFI-6-4T	FEMALE STRAIGHT 6MM TUBE X 1/4NPT
KFI-6-6T	FEMALE STRAIGHT 6MM TUBE X 3/8NPT
KFI-8-2T	FEMALE STRAIGHT 8MM TUBE X 1/8NPT
KFI-8-4T	FEMALE STRAIGHT 8MM TUBE X 1/4NPT
KFI-8-6T	FEMALE STRAIGHT 8MM TUBE X 3/8NPT
KFI-8-8T	FEMALE STRAIGHT 8MM TUBE X 1/2NPT
KFI-10-2T	FEMALE STRAIGHT 10MM TUBE X 1/8NPT
KFI-10-4T	FEMALE STRAIGHT 10MM TUBE X 1/4NPT
KFI-10-6T	FEMALE STRAIGHT 10MM TUBE X 3/8NPT
KFI-10-8T	FEMALE STRAIGHT 10MM TUBE X 1/2NPT
KFI-12-4T	FEMALE STRAIGHT 12MM TUBE X 1/4NPT
KFI-12-6T	FEMALE STRAIGHT 12MM TUBE X 3/8NPT



Female Bulkhead

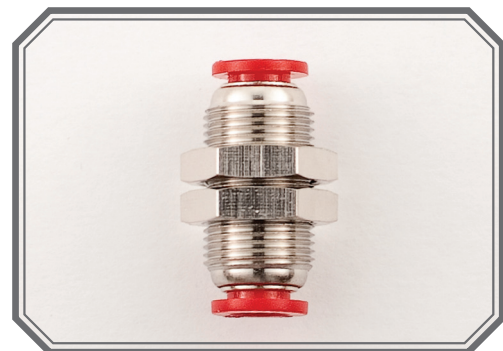
Name	Description (Fractional Inch)
JWI-532-2T	FEMALE BULKHEAD 5/32" TUBE X 1/8NPT
JWI-14-2T	FEMALE BULKHEAD 1/4" TUBE X 1/8NPT
JWI-14-4T	FEMALE BULKHEAD 1/4" TUBE X 1/4NPT
JWI-38-4T	FEMALE BULKHEAD 3/8" TUBE X 1/4NPT
JWI-38-6T	FEMALE BULKHEAD 3/8" TUBE X 3/8NPT
JWI-12-6T	FEMALE BULKHEAD 1/2" TUBE X 3/8NPT
JWI-12-8T	FEMALE BULKHEAD 1/2" TUBE X 1/2NPT



Name	Description (Metric)
KWI-4-2T	FEMALE BULKHEAD 4MM TUBE X 1/8NPT
KWI-6-2T	FEMALE BULKHEAD 6MM TUBE X 1/8NPT
KWI-6-4T	FEMALE BULKHEAD 6MM TUBE X 1/4NPT
KWI-8-4T	FEMALE BULKHEAD 8MM TUBE X 1/4NPT
KWI-8-6T	FEMALE BULKHEAD 8MM TUBE X 3/8NPT
KWI-10-4T	FEMALE BULKHEAD 10MM TUBE X 1/4NPT
KWI-10-6T	FEMALE BULKHEAD 10MM TUBE X 3/8NPT
KWI-12-6T	FEMALE BULKHEAD 12MM TUBE X 3/8NPT
KWI-12-8T	FEMALE BULKHEAD 12MM TUBE X 1/2NPT

Bulkhead Union

Name	Description (Fractional Inch)
JHI-532	BULKHEAD UNION 5/32" TUBE
JHI-14	BULKHEAD UNION 1/4" TUBE
JHI-38	BULKHEAD UNION 3/8" TUBE
JHI-12	BULKHEAD UNION 1/2" TUBE



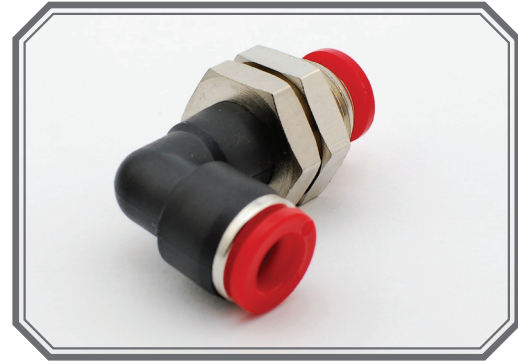
Name	Description (Metric)
KHI-4	BULKHEAD UNION 4MM TUBE
KHI-6	BULKHEAD UNION 6MM TUBE
KHI-8	BULKHEAD UNION 8MM TUBE
KHI-10	BULKHEAD UNION 10MM TUBE
KHI-12	BULKHEAD UNION 12MM TUBE



Bulkhead Union Elbow

Name	Description (Fractional Inch)
JHL-532	BULKHEAD UNION ELBOW 5/32" TUBE
JHL-38	BULKHEAD UNION ELBOW 3/8" TUBE
JHL-14	BULKHEAD UNION ELBOW 1/4" TUBE
JHL-12	BULKHEAD UNION ELBOW 1/2" TUBE

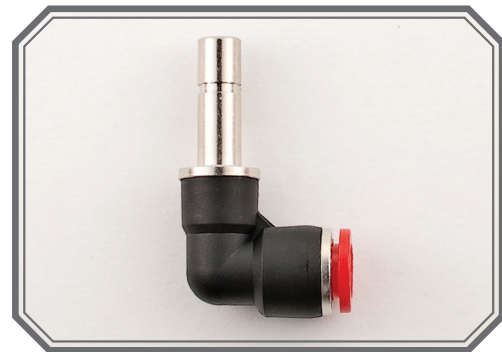
Name	Description (Metric)
KHL-4	BULKHEAD UNION ELBOW 4MM TUBE
KHL-6	BULKHEAD UNION ELBOW 6MM TUBE
KHL-8	BULKHEAD UNION ELBOW 8MM TUBE
KHL-10	BULKHEAD UNION ELBOW 10MM TUBE
KHL-12	BULKHEAD UNION ELBOW 12MM TUBE



Plug In Elbow

Name	Description (Fractional Inch)
JNL-532	PLUG IN ELBOW 5/32" TUBE
JNL-38	PLUG IN ELBOW 3/8" TUBE
JNL-14	PLUG IN ELBOW 1/4" TUBE
JNL-12	PLUG IN ELBOW 1/2" TUBE

Name	Description (Metric)
KNL-4	PLUG IN ELBOW 4MM TUBE
KNL-6	PLUG IN ELBOW 6MM TUBE
KNL-8	PLUG IN ELBOW 8MM TUBE
KNL-10	PLUG IN ELBOW 10MM TUBE
KNL-12	PLUG IN ELBOW 12MM TUBE



Plug In Reducer

Name	Description (Fractional Inch)
JDI-14-532	PLUG IN REDUCER 1/4" TUBE X 5/32 TUBE
JDI-38-14	PLUG IN REDUCER 3/8" TUBE X 1/4 TUBE
JDI-12-38	PLUG IN REDUCER 1/2" TUBE X 3/8 TUBE

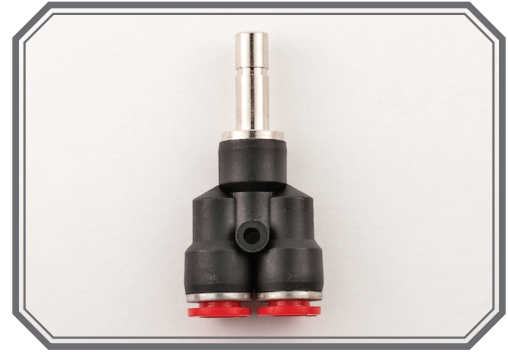
Name	Description (Metric)
KDI-6-4	PLUG IN REDUCER 6MM TUBE X 4MM TUBE
KDI-8-6	PLUG IN REDUCER 8MM TUBE X 6MM TUBE
KDI-10-8	PLUG IN REDUCER 10MM TUBE X 8MM TUBE
KDI-12-10	PLUG IN REDUCER 12MM TUBE X 10MM TUBE



Plug In Y

Name	Description (<i>Fractional Inch</i>)
JNY-532	PLUG IN Y 5/32" TUBE
JNY-14	PLUG IN Y 1/4" TUBE
JNY-38	PLUG IN Y 3/8" TUBE
JNY-12	PLUG IN Y 1/2" TUBE

Name	Description (<i>Metric</i>)
KNY-4	PLUG IN Y 4MM TUBE
KNY-6	PLUG IN Y 6MM TUBE
KNY-8	PLUG IN Y 8MM TUBE
KNY-10	PLUG IN Y 10MM TUBE
KNY-12	PLUG IN Y 12MM TUBE



Hosco announces Push-To-Connect pneumatic fittings

Hosco Push-To-Connect pneumatic fittings are offered in a variety of fitting configurations, which are also available in inch and metric sizes. Designed to simply push to connect with nylon and polyurethane tubing for pneumatics, Push-To-Connect fittings provide a secured assembly without having to apply extra sealant. Push-To-Connect fittings are made with a durable thermoplastic body. The connecting features of the fitting use a stainless steel gripping claw to ensure the tube being used is firmly sealed. If the tubing needs to be detached from the fitting it is as simple as pressing on the ejection ring and the tubing is disconnected effortlessly. Hosco Push-To-Connect pneumatic fittings with threaded components are made with nickel-plated brass, and have a pre-applied thread sealant.

Hosco is a finishing system, components manufacturer serving the finishing industry worldwide. Through system integrators and extensive network of regional authorized distributors and agents. Hosco offers standardized capability for circulation systems and application finishing on a Global basis while being the only supplier if inch and metric smooth-bore, cavity free and micro finishing valves and fittings designed specifically for paint.

Other quality products brought to you by Hosco:

- Stainless Steel Fittings • Spray Gun Accessories
- Valves • Hose/Tubing • Hose Fittings



28026 Oakland Oaks Court
Wixom, Michigan 48393
Phone: 248.912.1750
Toll free: 855.GO HOSCO (464.6726)
Fax: 248.912.1751

www.hosco.net
For questions: info@hosco.net
For ordering: orders@hosco.net